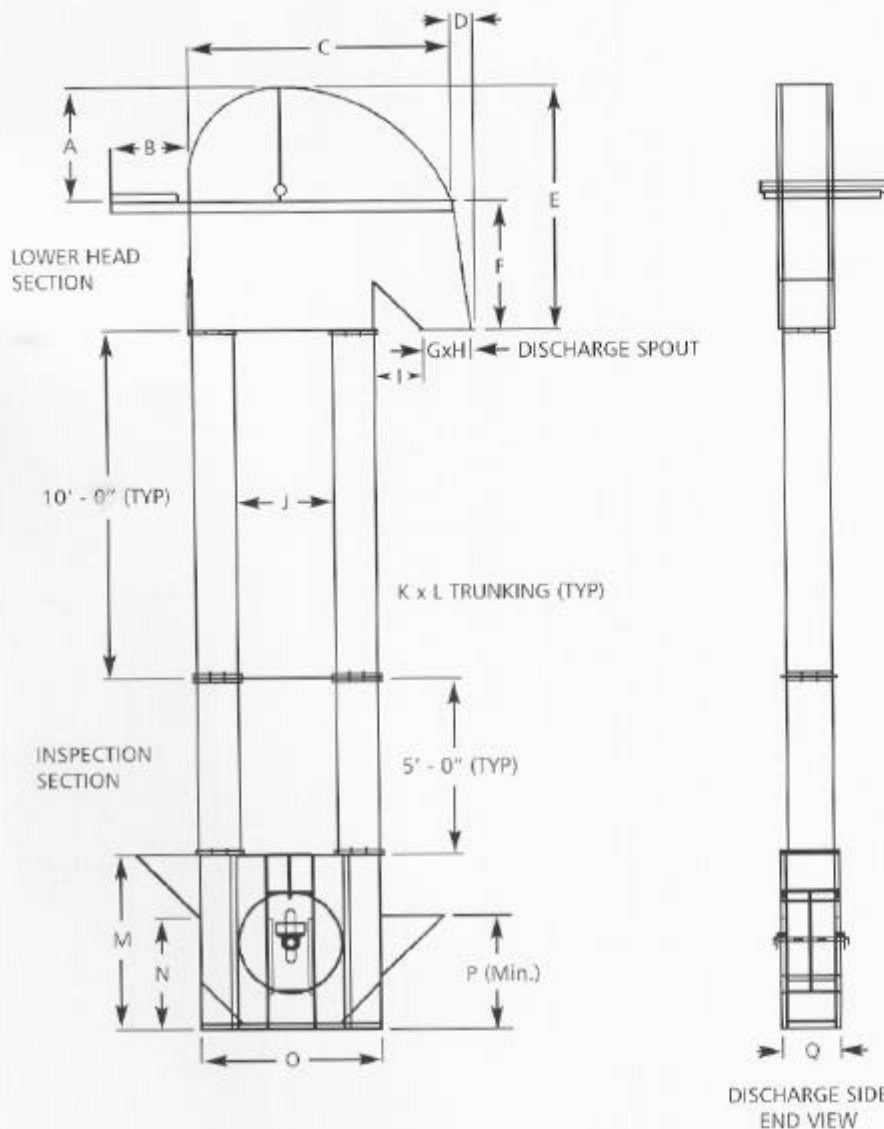


Bucket Elevator Specifications



General Notes:

Capacities based on dry, free flowing, granular material with proper loading and unloading conditions at 45#/CF. (721kg/m³).

General specifications and dimensions are subject to change without notice.

General specifications and dimensions are intended to provide sales assistance and preliminary guide to system layout only.

Note: 10' Pulley has single legging. Capacities Based on dry, free flowing, grain with proper loading and unloading conditions at 45#/CF.

Pulley Size	A	B	C	D	E	F	G	H	I	J	K	L	M	N	O	P	Q	Bucket Spacing	CFH	BPH	MTH	
10"	15	23	34	7	34	19	8	10	8	*NA	10	25	36	22	25	26	13	9	625	500	12	
254mm	381	584	864	179	864	483	203	254	203	*NA	254	635	914	22	635	660	330	6	937	750	19	
10" Pulley will run 116 RPM @ 311 FPM with Low Profile 6 x 4 Buckets (152mm x 102mm)																			4.5	1250	1000	25
																			3	1875	1500	38
16"	22	22	49	5	44	22	13	13	7	14	13	10	48	32	37	29	16	16	1875	1500	38	
406mm	559	559	1245	127	1118	559	330	330	179	356	330	254	1219	813	940	737	406	12	2500	2000	51	
16" Pulley will run 114 RPM @ 485 FPM with 9 x 6 Buckets (229mm x 152mm)																			10	3125	2500	63
																			8	3750	3000	76
24"	26	22	59	6	48	22	16	16	7	22	16	10	48	32	42	35	20	10	4375	3500	89	
610mm	660	559	1499	152	1219	559	406	406	179	559	406	254	1219	813	1062	889	508	8.5	5000	4000	102	
24" Pulley will run 81 RPM @ 514 FPM with 12 x 6 Buckets (305mm x 152mm)																			7	6250	5000	127
30"	32	27	75	5	69	37	16	16	12	28	16	12	60	44	55	37	20	10.5	6250	5000	127	
762mm	813	686	1905	127	1753	940	406	406	305	711	406	305	1524	1118	1397	940	508	8.5	7500	6000	153	
30" Pulley will run 72 RPM @ 562 FPM with 12 x 7 Buckets (305mm x 178mm)																						
36"	39	27	89	6	83	44	16	16	17	34	16	14	60	44	65	41	20	12.5	7500	6000	153	
914mm	991	686	2261	152	2108	1118	406	406	432	864	406	356	1524	1118	1651	1041	508	10.5	8750	7000	178	
36" Pulley will run 66 RPM @ 627 FPM with Low Profile 12 x 8 Buckets (305mm x 203mm)																			9.5	10000	8000	204
																			7.5	12500	10000	255